

TAYLOR®

Leading the Way in Accuracy®

Model 2755 Wireless Digital Rain Gauge Instruction Manual



Rain Collector/Remote Sensor Base Unit

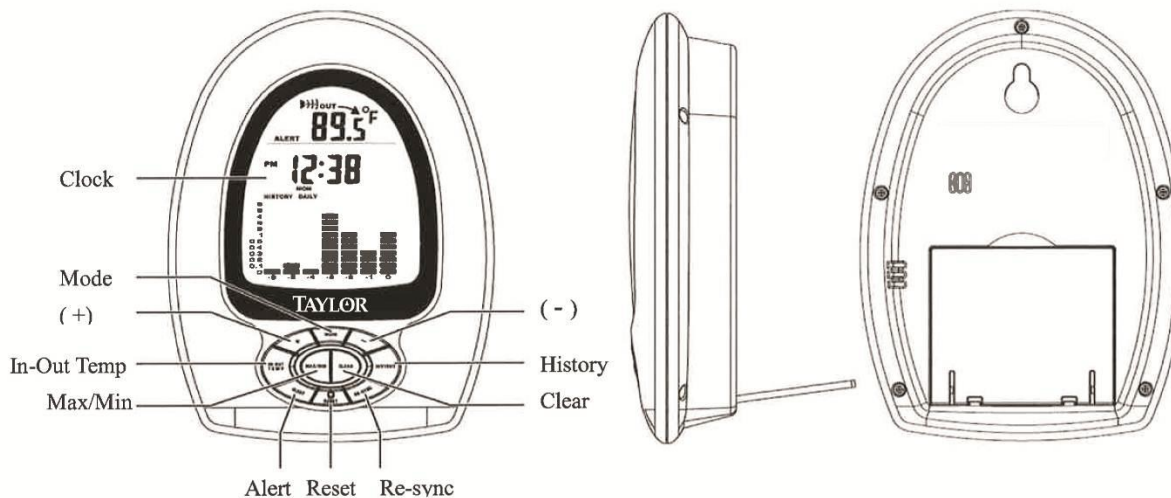
FEATURES AND SPECIFICATIONS

BASE UNIT:

- Rainfall and temperature measurement
- Rainfall history tracking: last hour, last 24 hours, daily, weekly and monthly
- Bar chart display for rainfall history
- Daily Min. / Max. rainfall tracking with auto daily clearing
- Indoor / outdoor temperature measurement with auto scroll
- Indoor temperature range: 32°F to 122°F (0°C to 50°C)
- °C/°F selectable
- Memory function to recall Minimum/Maximum temperature readings
- Temperature trend arrow indicates rising, falling or constant temperature
- Programmable, audible high / low temperature alert
- 12 or 24 hour selectable clock
- Calendar with day of the week display
- Low battery indicator for base station and rain collector
- Table top stand or wall mount
- Requires 2 AA batteries (not included)

RAIN COLLECTOR / REMOTE SENSOR:

- Self-emptying, waterproof with oversized collection area
- Wide base to minimize tip-over
- Transmission range: 100 ft. (range may be shorter based on interference present)
- Transmission frequency: 433MHz
- Outdoor temperature range: -4°F to 140°F (-20°C to 60°C)
Note: To extend outdoor temperature range to -20°F to 158°F (-29°C to 70°C) use 2 AA Lithium batteries
- Includes (2) stainless steel screws and (2) spikes for mounting to solid surface or ground
- Requires 2 AA alkaline or lithium batteries (not included)



BATTERY INSTALLATION AND ACTIVATION

Notes:

- Do not mix old and new batteries. Do not mix alkaline, standard (carbon-zinc) or rechargeable (ni-cad, ni-mh, etc.) batteries.
- For maximum performance in normal conditions we recommend using good quality alkaline batteries. When temperatures are near or below freezing (32°F / 0°C), alkaline batteries can lose power resulting in a loss of remote transmission. If you reside in an area that experiences frequent temperatures near or below freezing, we recommend using lithium batteries to minimize the loss of transmission.

NOTE: please recycle or dispose of batteries per local regulations.

WARNING: Batteries may pose a choking hazard. Do not let children handle batteries.

PRECAUTION: Do not dispose of batteries in fire. Batteries may explode or leak. Remove the batteries if the thermometer base unit or remote sensor will not be used for a long period of time.

Battery Installation of Base Unit

- Remove the vinyl label from the LCD of the base unit.
- Open the battery door at the back of the base unit and insert (2) AA batteries according to the polarity markings. Replace the battery door.
- Insert the end of a paper clip into the hole in RESET and push the button.
- Set the clock and calendar as follows.

Setting the Calendar, Clock, °C / °F:

- When either the clock or calendar is being displayed, press and hold the MODE button for 3-4 seconds until the year display is flashing
- Press + or – to set the year
- Press MODE to display the date
- Press + or – to set the month and day (Month and day are not set independently. Push and hold + or – to fast scroll through to the month and day you want to set).
- Press MODE to display time
- Press + or – to set the time
- Press MODE and the display will show 12 hr
- Press + or – to set your clock to 12 hr or 24 hr time format
- Press MODE and the temperature field will be flashing
- Press + or – to select °F or °C format
- Press MODE to lock in the settings

Note: If you set the time and date after initial activation, the accuracy of the rainfall history data may be affected. Reset the unit to clear the history by pressing the RESET button then set your desired time and date.

- Press the RE-SYNC button.
- Position the Rain Collector/Remote Sensor close to the base unit.

Battery Installation of Rain collector/Remote sensor

- See photos below. Press the tab on the base of the rain collector and remove the rain collector's cover. Do not touch the wires in the rain collector's base. (Photos 1 & 2)
- Using a screwdriver, unscrew the battery door on the bottom of the rain collector's base and insert (2) AA batteries according to the polarity markings (Photo 3)
- Replace the battery door and tighten screws securely to prevent water leakage.
- Remove any tape or cardboard from the rain cup pendulum to allow it to fill and empty when rainfall occurs.
- There is a plastic cover over the rain collector's electronic components. Gently pry both sides of the cover and remove it. Press the RESET button inside the rain collector's base. Replace the cover. (Photos 4, 5 & 6)
- Replace the rain collector's cover on top of the base.
- When the OUT temperature is shown on the display of the base unit, synchronization between the base unit and the remote sensor is complete.



Photo 1
Rain collector base



Photo 2
Remove cover



Photo 3
Insert batteries



Photo 4
Remove cover



Photo 5
Cover is removed

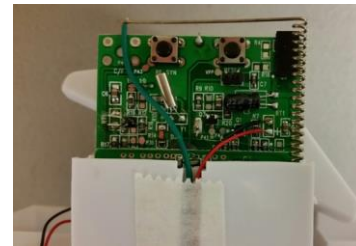
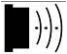


Photo 6
Press RESET

POWER UP SYNCHRONIZATION

The base unit will search for the RF (radio frequency) signal from the rain collector for 6 minutes after reset or after batteries are inserted. When the temperature display on the main unit shows the OUT temperature, synchronization between the base unit and remote unit is complete.

The top, left of the base unit display will show the  icon to indicate signal transmission. If the OUT temperature does not show on the display within 6 minutes after reset, press the RE-SYNC button and the main unit will search for the RF signal for another 6 minutes. If the base unit still fails to show the out temperature, refer to the **LOSING SYNCHRONIZATION** section.

Locating the Base Unit and Rain Collector/Remote Sensor

- Choose a suitable place for the base unit and rain collector/remote outdoor sensor, within the transmission distance.
- Place the base unit near a window, but away from direct sunlight or sources of heat or air conditioning to ensure accurate temperature readings.
- To get the most accurate readings and to prolong the life of your rain collector/remote sensor, we recommend that you mount it out of direct sunlight and rain. Direct sunlight will heat the casing and inflate temperatures readings. Place the sensor in a dry, shaded area. Fog and mist will not affect the sensor, but large volumes of soaking rain may. To guard against this, we recommend that you mount it under the eave of your house, your garage or any other suitable place that will keep it out of direct sun and rain.
- The location you choose is critical for maximizing the transmission range. The remote sensor is designed to transmit unimpeded 80 to 100 feet. Transmitting through walls, metal doors and metal framed windows may reduce the transmission range. To optimize the transmission distance, the remote unit should be positioned in a location that minimizes these obstructions. Other interference from electrical sources such as home security systems, wireless doorbells and wireless home entertainment equipment may interrupt the transmission signal temporarily.

Important: Though the remote unit is weather resistant, it should be placed away from direct sunlight, rain, snow and should never be submerged in water.

Notes:

- The outdoor rain collector must be placed on a level, horizontal surface for accurate rainfall measurement.
- Use the enclosed screws to mount the rain collector on a solid surface or use the metal spikes to secure the unit in a grassy area.
- **Warning:** Ice will affect the accuracy of rainfall readings and will damage the internal mechanism of the rain collector. In temperatures below freezing the collector can remain outdoors for temperature data transmission, but the unit must be placed in a protected area to prevent ice damage.

INDOOR AND OUTDOOR TEMPERATURE

- The indoor temperature is shown after activation until the first outdoor temperature signal is received. The display will then change to the outdoor temperature reading.
- Press the IN-OUT TEMP button to toggle between indoor and outdoor temperature.
- To activate Auto Scroll mode, press and hold the IN-OUT TEMP button for 3-4 seconds. Double curved arrows will show at the top of the LCD readout and the unit will automatically toggle between indoor and outdoor temperatures. Press and hold the IN-OUT TEMP button for 3-4 seconds to de-activate Auto-Scroll mode.
- The temperature trend arrow which is located directly above the temperature reading will indicate the trend of indoor and outdoor temperatures during the last three minutes.

TEMPERATURE ALERT

When either the indoor or outdoor temperature exceeds the upper or lower pre-set limits, the alarm will sound for five seconds. It will be accompanied by a flashing alert icon and flashing arrow to show that the temperature has reached the upper or lower limit. The audible alert will sound for five seconds every minute.

Setting the Temperature Alert:

- When setting the alert temperatures, the display will change in increments of 1.8°F or 1.0°C.
- Press and hold the ALERT button until the alert icon, up arrow and IN icon are shown on the display and the alert temperature is flashing.
- Press + or - to set the desired indoor alert temperature upper limit.
- Press ALERT and the down arrow will be displayed. Press + or - to set the desired indoor alert temperature lower limit.
- Press ALERT and the up arrow and OUT icon will be displayed. Press + or - to set the desired outdoor alert temperature upper limit.
- Press ALERT and the down arrow will be displayed. Press + or - to set the desired outdoor alert temperature lower limit.
- Press ALERT to confirm the settings and exit the alert temperature setting mode.

Activating the Temperature Alert:

- After you have entered all your temperature alert limits press ALERT and the system will be activated. The alert icon will show on the display.

De-activating the Temperature Alert:

- Press the ALERT button when either the indoor or outdoor temperature has exceeded the limit. The audible alert will stop and the alert icon will stop flashing. The arrow icon will continue to flash to indicate the out of range condition.
- The alert will sound again if the indoor or outdoor temperature falls back within the upper or lower limit and then exceeds the upper or lower limit again.
- To turn off the alert permanently, press ALERT until the alert icon is no longer displayed.

VIEWING CLOCK, CALENDAR, RAINFALL RATE AND TOTAL RAINFALL

- Press the MODE button to toggle the main display between time, date, rainfall rate and total rainfall.
- The rainfall reading is accumulative data since the last press of either the RESET or CLEAR button. To clear the rainfall reading, press the CLEAR button when the rainfall reading is shown on the display.

RAIN FALL HISTORY

This unit has a large capacity memory that can store and display:

- Last hour rain fall
- Last 24 hours total rain fall
- Daily rain fall (Up to last six days as well as current day)
- Weekly rain fall (Up to last six weeks as well as current week)
- Monthly rain fall (Up to last six months as well as current month)

The Daily Rainfall history bar chart is set as the default display after activation.

To view the rainfall history for other time periods:

- Press HISTORY once to display the weekly rainfall
- Press again to display monthly
- Press again to display last hour (will display for 5 seconds only)
- Press again to display last 24 hours (will display for 5 seconds only)
- Press again to return to daily

The rainfall history bar chart displays in increments from 0.1” to 6.0”. Most of the time, the actual rainfall reading will fall between increments. The bar chart will show the last increment that was actually reached. For example: If the actual rainfall is 0.8”, the bar chart will show 0.5”. The chart will not show 1.0” until the actual rainfall total reaches 1.0”.

More detailed daily, weekly and monthly history data are available. Press and hold the HISTORY button when your desire corresponding history data are shown. The “0” (Current) bar will show up and the precise data will be shown on the time display. Press + or – and you can scroll through the daily, weekly or monthly prior data.

Note: On the bar chart display, the “0” represents the current period. -1, -2, etc. indicate the prior periods.

MAXIMUM AND MINIMUM RECORDS

Temperature Maximum and Minimum

The highest and lowest record of indoor temperature, outdoor temperature and rainfall are stored automatically after you activate the base unit. You can recall the records at any time by pressing the MAX/MIN button. With each press of the button, in sequence the display will show; indoor maximum reached, indoor minimum reached, outdoor maximum, outdoor minimum, rainfall maximum and rainfall minimum. The corresponding MAX or MIN icon will be displayed each time. To clear any maximum or minimum record, press the CLEAR button when the appropriate record is shown on the display.

Rainfall Maximum and Minimum

The rainfall maximum and minimum record is a daily record which counts from 12:00am to 11:59pm every day. Aside from the automatic daily clear, the rainfall maximum or minimum record can be cleared by pressing the CLEAR button when the appropriate record is shown on the display.

LOSING SYNCHRONIZATION

If the main unit displayed a proper OUT temperature and rainfall rate, but now displays blanks "--.C" or "--.—in", the unit may have lost synchronization. If this occurs, press the RE-SYNC button of the main unit. The base unit will search for the RF (radio frequency) signal for 6 minutes and will re-initialize synchronization with the remote.

PRECAUTIONS

- 1.** The base unit is intended for indoor use only. It is not sealed against moisture and could be damaged if used outdoors.
- 2.** Do not immerse the base unit in water. If you spill liquid on it, dry immediately with a soft, lint-free cloth.
- 3.** Though rain collector/remote sensor is weather-resistant, it should not be left outdoors in snow or at temperatures at or below -4°F (-20°C). If the temperature falls below this point or if snow accumulates, move the rain cup sensor to an indoor area. Otherwise, permanent damage to the transmitter's internal circuits may occur.
- 4.** Though the remote rain collection cup sensor is weather-resistant, it should be placed away from ice or snow, and should never be submerged in water.
- 5.** Do not clean the unit with abrasive or corrosive materials. This may scratch plastic parts and corrode electronic circuits.
- 6.** Do not subject units to excessive force, shock, dust, temperature or humidity. This may result in malfunction, shorter electronic life span, damaged battery or distorted parts.
- 7.** Do not tamper with the unit's internal components. Doing so will invalidate the warranty on this product and may cause damage. The units contain no user-serviceable parts.
- 8.** Do not mix old and new batteries. Do not mix alkaline, standard (carbon-zinc) or rechargeable (ni-cad, ni-mh, etc.) batteries. Do not dispose of batteries in fire. Batteries may explode or leak. Remove the batteries if the units will not be used for a long period of time.
- 9.** This product is for measuring weather temperatures only. **DO NOT PLACE UNITS INTO OVENS, GRILLS, FREEZERS or MICROWAVE OVENS.**
- 10.** Always read the instruction manual before operating this product.
- 11.** Due to continuous product improvements, the example illustrations/photos shown in this manual may differ from the actual product.

FCC STATEMENT OF COMPLIANCE

Caution: Changes or modifications not expressly approved by the party responsible for compliance could void the user's authority to operate the equipment.

Note: This device complies with part 15 of the FCC Rules. Operation is subject to the following two conditions: (1) this device may not cause harmful interference, and (2) this device must accept any interference received, including interference that may cause undesired operation. This equipment has been tested and found to comply with the limits for a Class B digital device, pursuant to part 15 of the FCC rules. These limits are designed to provide reasonable protection against harmful interference in a residential installation. This equipment generates, uses and can radiate radio frequency energy and, if not installed and used in accordance with the instructions, may cause harmful interference to radio communications. However, there is no guarantee that interference will not occur in a particular installation. If this equipment does cause harmful interference to radio or television reception, which can be determined by turning the equipment off and on, the user is encouraged to try to correct the interference by one or more of the following measures:

- Reorient or relocate the receiving antenna.
- Increase the separation between the equipment and receiver.
- Connect the equipment into an outlet on a circuit different from that to which the receiver is connected.
- Consult the dealer or an experienced radio/TV technician for help.

ONE (1) YEAR LIMITED WARRANTY

This product is warranted against defects in materials or workmanship (excluding batteries) for one (1) year from date of original purchase for the original purchaser. It does not cover damages or wear resulting from accident, misuse, abuse, commercial use, or unauthorized adjustment and/or repair. Should this product require service (or replacement at our option) while under warranty, do not return to retailer. Please pack the item carefully and return it prepaid, along with store receipt showing date of purchase and a note explaining reason for return to:

**Taylor Precision Products, Inc.
2220 Entrada Del Sol, Suite A
Las Cruces, New Mexico 88001
1-866-843-3905
www.taylorusa.com**

There are no express warranties except as listed above. This warranty gives you specific legal rights, and you may have other rights which vary from state to state.

For additional product information, or warranty information outside the USA, please contact us through www.taylorusa.com.com.

©2015 Taylor Precision Products, Inc. and its affiliated companies, all rights reserved. Taylor® is a registered trademark and WeatherGuide™ is a trademark of Taylor Precision Products, Inc. and its affiliated companies. All rights reserved.

Made to our exact specifications in China.